

RHEOMIX® 235

Water-repellent mortar admixture

DESCRIPTION/USES:

RHEOMIX® 235 mortar admixture is a ready to use liquid water repellent for use in masonry mortar applications. This specially formulated, non-chloride admixture can be used to produce masonry mortar which strongly resists water wicking and moisture penetration. RHEOMIX 235 mortar admixture, when added to a mix produces a water resistant lining in the pores and capillaries of the hardened mortar, greatly reducing water absorption. Masonry mortar treated with RHEOMIX 235 admixture meets all of the performance criteria of ASTM C 270, Standard Specification for Mortar for Unit Masonry.

ADVANTAGES:

RHEOMIX 235 admixture improves the quality of masonry mortar by:

- Reducing water absorption.
- Increasing compressive strength.
- Providing greater resistance to frost damage.
- Improving bond to concrete masonry.
- Reducing the potential for efflorescence.

USAGE:

RHEOMIX 235 mortar admixture is recommended for use in providing water repellency, leakage resistance and efflorescence control in concrete masonry construction. RHEOMIX 235 mortar admixture can be used with portland cement and lime, masonry cements, mortar cement, or other acceptable combinations.

RHEOMIX 235 mortar admixture is required for all RHEOMIX 235 water repellent specified masonry construction projects.

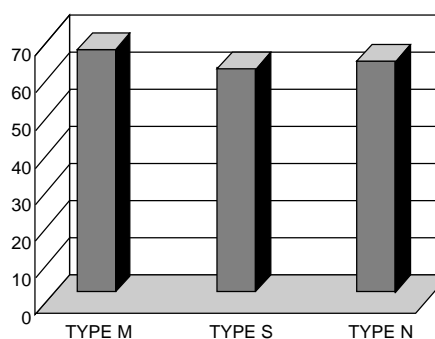
MORTAR JOINTING:

Water repellency of the mortar joint is influenced by its ability to resist moisture “wicking” and to shed the flow of water. The addition of RHEOMIX 235 mortar admixture imparts water repellency throughout the mix. However, joints must also be properly tooled and configured to achieve maximum performance. A concave-tooled mortar joint has been shown to produce the best results by both the National Concrete Masonry Association (NCMA) and Brick Institute of America (BIA). Therefore, concave tooling is recommended whenever RHEOMIX 235 mortar admixture is incorporated.

ADDITION RATE:

Add 8 fl oz (235 mL) of RHEOMIX 235 mortar admixture to each bag or ft³ (.03 m³) of cementitious material used in the mix. Each bag of masonry cement (Type N, S, or M), requires 8 fl oz (235 mL) of RHEOMIX 235 mortar admixture.

Rheomix 235 - Treated Masonry Mortars
Absorption (% of Reference Mortars)



ASTM C 642 (Modified)

The following mix design chart for portland cement/hydrated lime mixes shows addition rates for the three mortar types made from these materials.

Mortar (type)	Portland (Ft3, .03 M3)	Lime (Ft3, .03 M3)	Sand (Ft3, .03 M3)	Rheomix 235 (ounces)	Rheomix 235 (mL)
N	1	1	6	16	475
S	1	1/2	4-1/2	12	355
M	1	1/4	3-3/4	10	295

DIRECTIONS FOR USE:

1. Mix all mortar ingredients until thoroughly blended and wetted to a consistency which is slightly drier than desired.
2. Add the proper amount of RHEOMIX 235 mortar admixture.
3. Continue mixing for an additional 1-1/2 minutes while adjusting the consistency with final mix water. Total mixing time should be 3 to 5 minutes.
4. Prepared mortar should be placed within 2-1/2 hours after initial mixing.

LIMITATIONS:

RHEOMIX 235 mortar admixture will not compensate for flaws in building design, mix proportioning, production procedures, or improper construction methods. Proper masonry design from NCMA-TEKs 10-1, 19-2, 19-4, and 19-5 should be utilized. Mortar shall be prepared according to ASTM C 270.

PACKAGING:

RHEOMIX 235 mortar admixture is available in 16 fl oz (475 mL) containers supplied in cases of 48. Each case of RHEOMIX 235 mortar admixture contains a total of 6 gallons (22.7 liters), enough to treat 96 bags of cementitious material.

TEMPERATURE PRECAUTIONS:

RHEOMIX 235 admixture must be protected from freezing. Store at temperatures above 25 °F (-4 °C) and below 118 °F (48 °C) in closed containers. Do not store in direct sunlight.

For additional information on RHEOMIX 235 mortar admixture, contact your local Master Builders representative.

Master Builders, Inc. United States

23700 Chagrin Boulevard
Cleveland, Ohio 44122-5554
(800) MBT-9990
Fax (216) 831-6910

Canada

3637 Weston Road
Toronto, Ontario M9L 1W1
(800) 387-5862
Fax (416) 741-7925

Mexico

Bld. M. Avila Camacho 80, 3er Piso
53390 Naucalpan, México
011-525-557-5544
Fax 011-525-395-7903